

nGenius 3900 Series Packet Flow Switch

HIGHLIGHTS

- 720 Gb/s Switching Capacity per P-BLADE
- Redundant power & management
- Management via GUI, CLI, SNMP, and nGeniusONE®
- 1/10/40/100 GbE options for every slot
- Point-&-Click End-to-End Provisioning
- Industry-leading nanosecond-level delay

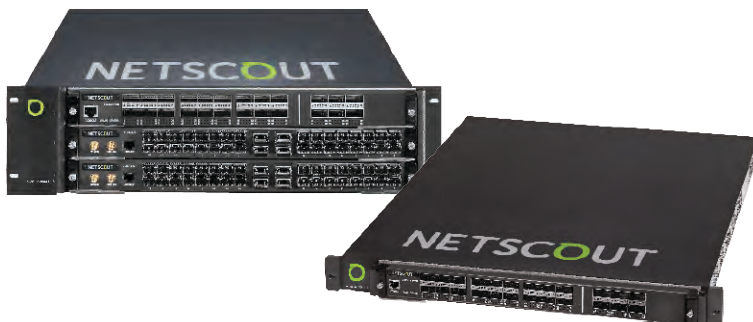
Product Overview

nGenius 3900 is the industry's most flexible monitoring switch, powered by a hardware-accelerated 720 Gb/s in every slot. Three blade options provide flexible interface choices. Each P-Blade switching engine includes 1, 10 and 40 GbE interfaces, configurable port-by-port for both speed and media. Each P-40 Blade switching engine includes our highest density of 40GbE interfaces. Each P-100L Blade introduces support for 100GbE. To maximize space and cost, each PFS Blade (P-Blade, P40 Blade, P100L Blade) comes preinstalled with all packet conditioning, traffic aggregation and management features – thus avoiding the need for additional “packet conditioning” blades typical of traditional packet flow switches.

nGenius 3900 includes the industry's most advanced GUI-based configuration system, enabling users simply to draw and connect ports, filters and other monitoring and switching functions onto a graphical “topology map”. This empowers users to make dynamic, intuitive changes – e.g., modifying filters, enabling/disabling header stripping, creating new traffic paths - and real-time statistics for each individual component.

Scalability

nGenius 3900 expands in 1U/1-slot increments to hundreds of 1/10 GbE ports and to more than 2 Tb/s of switching capacity and in a single, managed monitoring fabric. nGenius 3900 can also provide guaranteed bandwidth for all connections, whether on a single blade, across multiple blades in a single chassis or even between chassis.



- 3901** | 48-Port 1/10 GbE, 12-Port 40 GbE, 2-Port 100 GbE
3903 | 144-Port 1/10 GbE, 36-Port 40 GbE, 6-Port 100 GbE

Flexibility

nGenius 3900 delivers incremental flexibility, empowering users to configure SFP+ ports for either 1 or 10 GbE, and QSFP+ ports for either 1, 10 or 40 GbE. Additionally, users can configure CFP4 ports for 100GbE ports. Moreover, any port can serve for ingress, egress or inter-switch connections.

Management

nGenius 3900 can be configured locally via GUI or CLI, and centrally via NetScout's redundant nGenius PFS Management System (sold separately). nGenius 3900 supports SNMP, TACACS+/RADIUS authentication and Syslog.

Advanced Packet Conditioning

nGenius 3900 delivers packet conditioning features in every Blade without requiring any additional or special processing modules in the system. These packet conditioning features include wire-speed intelligent Layer 2-7 filtering, VN-Tag / VLAN stripping/tagging, CFP Stripping, flexible traffic aggregation, wire-speed packet slicing, Layer 2/3 packet deduplication, etc.

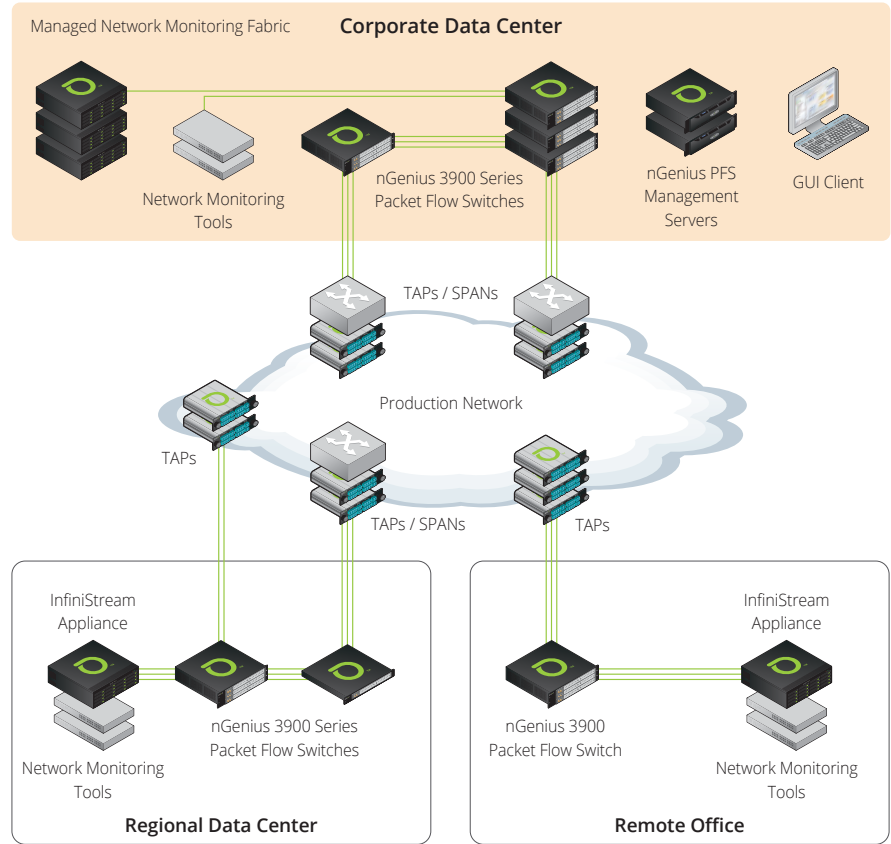


Figure 1: nGenius PFS Management software delivers enterprise-wide administration and monitoring of the deployed nGenius 3900 series switches.

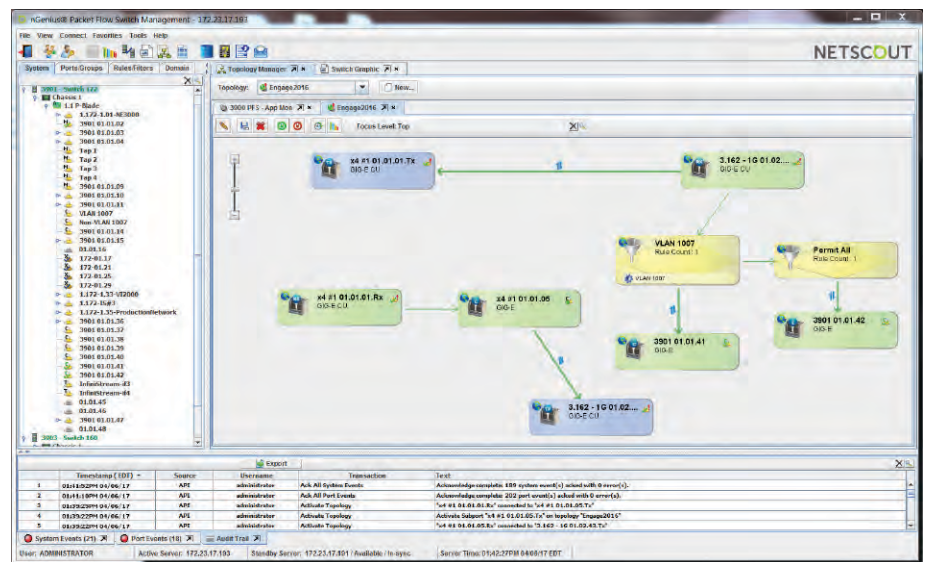


Figure 2: Topology management in nGenius PFS Management software facilitates large-scale, end-to-end, drag-and-drop provisioning.

SPECIFICATIONS

Data ports	P Blade: 32 1/10GbE SFP+ ports and 4 40GbE QSFP+ ports, or up to 48 1/10GbE ports
	P40 Blade: Up to 12 40GbE QSFP+ ports, or up to 48 1/10GbE ports
	P100L Blade: Up to 2 100GbE CFP4 ports and 24 10GbE ports via QSFP+ breakout cable
Port options	Copper, Multimode, Single Mode
Management Port	100/1000Base-T DB-9 Serial
Dimensions	1.75 in (44.5 mm) Height 17.0 in (432 mm) Width 16.5 in (419 mm) Depth
Weight	16.75 lbs (7.6 kg)
Mounts	Mounting hardware and cable management included
Power Rating (AC)	1+1 Hot Swappable Redundant 100-240VAC
Maximum Power (AC)	184W
Heat Dissipation (AC)	628 BTU/Hr
Power Rating (DC)	50/60Hz; 36 – 75 VDC
Maximum Power (DC)	192W
Heat Dissipation (DC)	655 BTU/Hr
Airflow	Side to side
Operating Humidity	1% - 85% (non-condensing)
Altitude	0 to 10,000 feet
Regulatory Approvals	FCC, CE, UL, RoHS, TUV

nGeniusONE Service Assurance Platform

The nGeniusONE Service Assurance platform helps dramatically shorten the time required to solve network and application performance issues by providing one common set of metadata for service visibility across application tiers, network components, and diverse user devices. With both macro-level and micro-level insights into the performance and use of complex, enterprise-wide services, the nGeniusONE Service Assurance platform addresses the needs of a collaborative IT operational team including network, application, server, and service delivery managers.

ASI Technology



The nGeniusONE Service Assurance platform is powered by Adaptive Service Intelligence™ (ASI) technology, NETSCOUT's patented, next generation Deep Packet Inspection (DPI) engine that relies on packet-flow data to provide real-time, contextual analysis of service, network, and application performance. The superior scalability, depth, and speed of ASI enables it to generate Key Performance Indicators (KPIs), Key Traffic Indicators (KTIs), Key Server Indicators (KSIs) and Key Error Indicators (KEIs) for protocols and applications that business services depend upon.



Corporate Headquarters
NETSCOUT Systems, Inc.
Westford, MA 01886-4105
Phone: +1 978-614-4000
www.netscout.com

Sales Information
Toll Free US: 800-309-4804
(International numbers below)

Product Support
Toll Free US: 888-357-7667
(International numbers below)

NETSCOUT offers sales, support, and services in over 32 countries. Global addresses, and international numbers are listed on the NETSCOUT website at: www.netscout.com/company/contact-us-2/