



Real-Time Operations and Security Insights for Government IT

Accelerate Government IT transformation with modern DevSecOps tools for Federal, State, and Local systems. Improve security postures with integrated real-time dashboards, alerts, and reports.

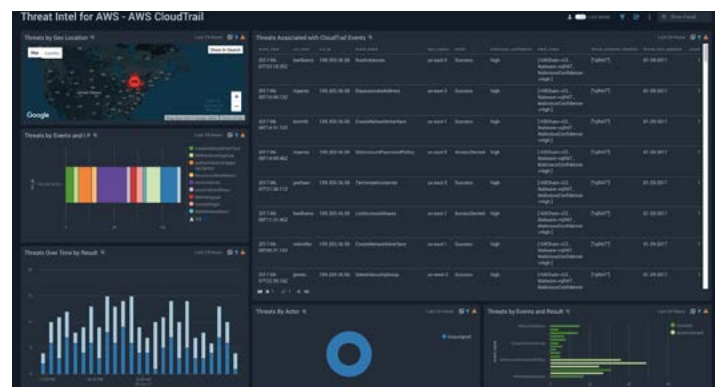
Empower Government IT teams to efficiently find and resolve complex issues spanning on-prem, hybrid-cloud, and cloud-native workloads fast. Our modern platform make it easy for cross functional teams to quickly improve their federal, state, and local Government IT security postures to boost FISMA/NIST scores. Both teams migrating to cloud and teams building cloud-native applications get consolidated views to benchmark, monitor, and respond to critical incidents effectively.

Sumo Logic makes it easy for DevSecOps teams to quickly gain full-stack visibility and insights across the entire lifecycle of legacy and modern government applications. Real-time dashboards consolidate both IT operations data with security analytics to give Developers, IT Operations, and Security teams a unified place to gain insights from logs, metrics, and events from any data source for faster troubleshooting.

Resolve Issues Faster

Get ahead of complex issues by transforming team postures from reactive troubleshooting to proactive understanding of behavior and performance across your solution stack. Both novice and power users are able to quickly gain value from our hundreds of out of the box integrations, built in machine learning, and seamless API extensibility.

- **Modern architectures** - Out of the box cloud platform integrations with AWS, Azure, and Google combined with support for kubernetes and serverless meets the needs of DevOps and security teams.
- **Outlier detection** - Our advanced analytics platform is designed to help your team uncover hard to find behaviors quickly by correlating across diverse data types to take action quickly.
- **Quickly correlate** - Detect user accounts and systems that are misbehaving or have been compromised by joining data across multiple types and sources to build workflows that fits your organization.



No Hardware

Teams never have to worry about deploying hardware, scaling equipment, or scheduling software updates when using Sumo Logic's fully managed cloud native platform. Our platform grows with your organization or agency's consumption and meets changing demand by automatically scaling up to changing lifecycle requirements matching spike daily, weekly, or seasonal workloads.

- **Cloud economics** - Our cloud-native multi-tenant SaaS platform scales with your organization or agency's changing demand. We don't penalize for growth, emergencies, or seasonal ingest spikes.
- **Variable retention** - Our platform enables your team to cost effectively keep more data by deciding how to tier data retention to meet the needs of different forensics and compliance requirements.
- **Analytics on-demand** - Remove barriers with an at scale analytics platform that's available 24/7 capable of analyzing over 100 petabytes of data per day. Instantly send ingest terabytes of unstructured, semi-structured, and structured machine data a day for analysis without worrying about hardware or servers.
- **Unlimited insights** - Run as many queries as you need against the data you've already sent to Sumo Logic such as logs, time-series metrics, and event data. Send real-time data streams to customized dashboards, timed reports, or store them for future analysis.

Reduce risk and improve postures

Stay ahead of threats with real-time detection and alerting. Sumo Logic's integrated threat intelligence database enables organizations to detect breaches and prevent data loss.

- **Transition to DevSecOps** - Full visibility across the IT pipeline ensures security and insights from development to production is available for analysis. Build, run, and secure complex applications and infrastructure quickly with confidence.
- **Teardown silos** - Remove barriers that divide teams and share data across missions with controlled content sharing across large federal communities when appropriate while protecting privacy.
- **Protect PII data** - Build hash rules to automatically obfuscate or hide sensitive information from incoming datastreams upon ingest.
- **Always secure** - With security at our core, Sumo Logic is designed by security professionals for security conscious teams. Our platform undergoes regular independent third party audits for PCI, SOC 2 Type II, CSA Star, and more.

At Scale Today

Sumo Logic operates thousands of backend hosts ingesting over 150TB per day across 7 operating regions from over 2 million data sources. During a typical month, there are over 15,000 unique users visiting 50,000 unique dashboards. The elasticity of our multi-tenant SaaS platforms allow for peak ingest to fluctuate 10-100x their normal load while only charging for what you use.

Legacy on-prem software can't achieve our scale because they're provisioned and licensed to static hardware resources. Organizations typically over-provision for peak demand and pay for excess capacity the rest of the year. Others who under-provision, suffer long processes to purchase licenses to deploy more instances during unexpected big days. Single-tenant software just can't match the kind of scale, performance, and cost efficiency of cloud native solutions like Sumo Logic.

