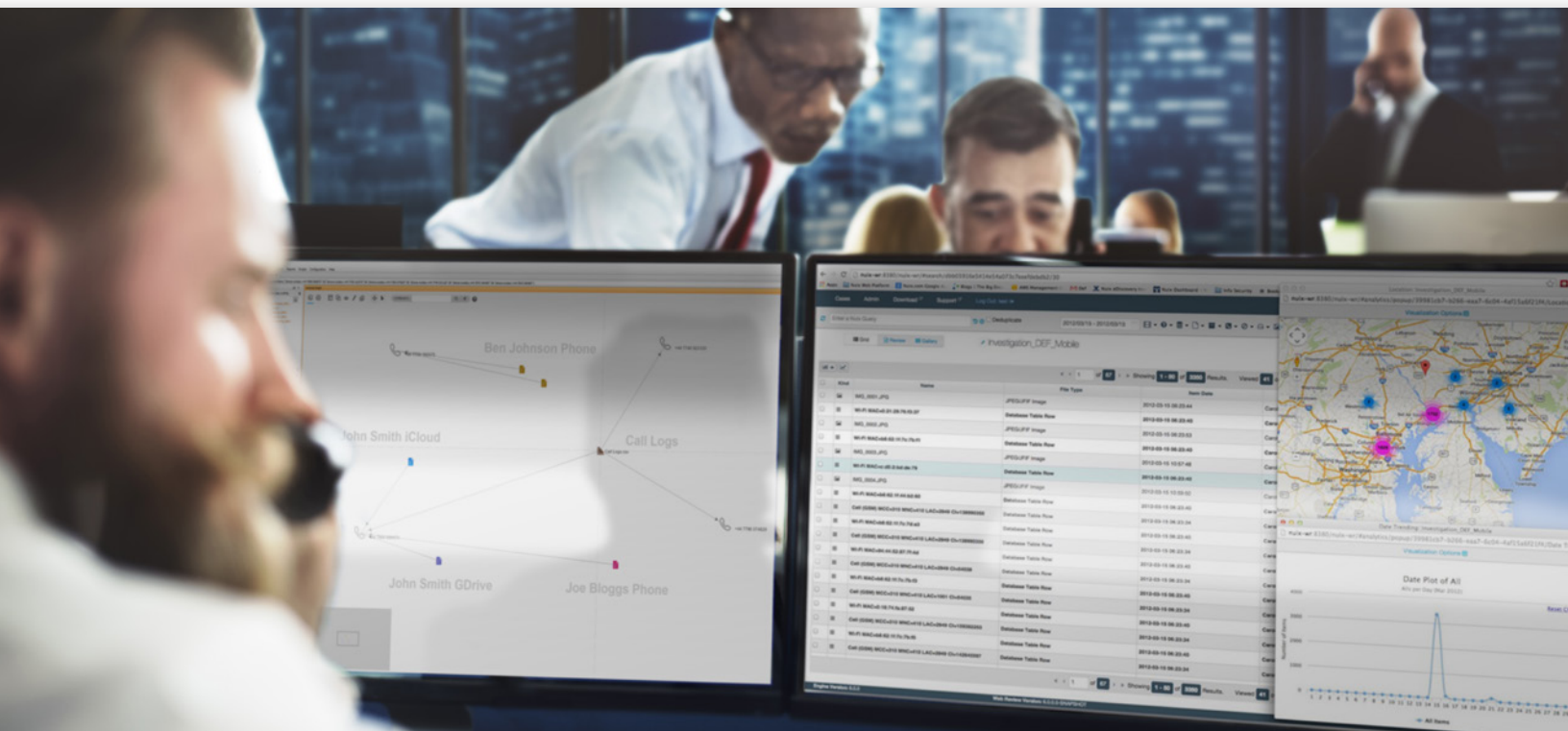


NUIX LAB SOLUTIONS FOR DIGITAL INVESTIGATIONS



Cases involving digital evidence can vary greatly in size and scope. The tools and techniques used for a relatively simple investigation will differ greatly from the resources employed to tackle a case featuring massive data volumes, a diversity of evidence and a large number of digital exhibits.

Complex cases often involve multiple linked suspects, which means multiple linked devices and large volumes of data. This requires distributing the workload amongst many people within an agency. Crimes can span local, state, and even national boundaries. In such cases, agencies must share information and find ways to collaborate across and break down intelligence, and evidence silos.

Every law enforcement, national security, government and regulatory body has different needs, and handles different kinds of cases. However, they all need faster results from their digital investigation technology so they can beat case backlogs, stay ahead of growing data volumes, and prevent more crimes.

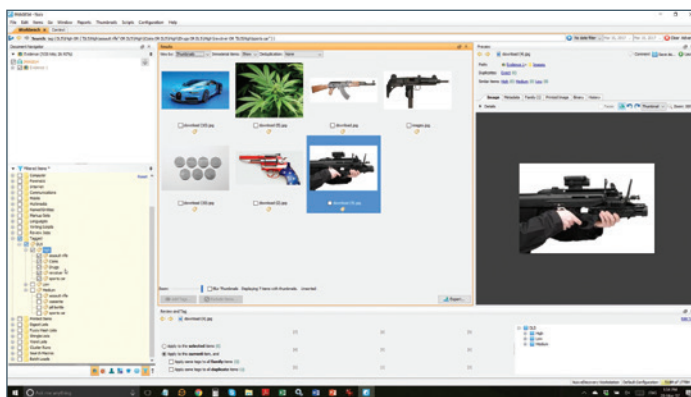
Nuix enables digital forensic labs of all sizes to work more effectively and efficiently. Our software is battle tested for resolving complex digital and cybersecurity crime by some of the largest agencies in the world.

With Nuix, law enforcement and government agencies can:

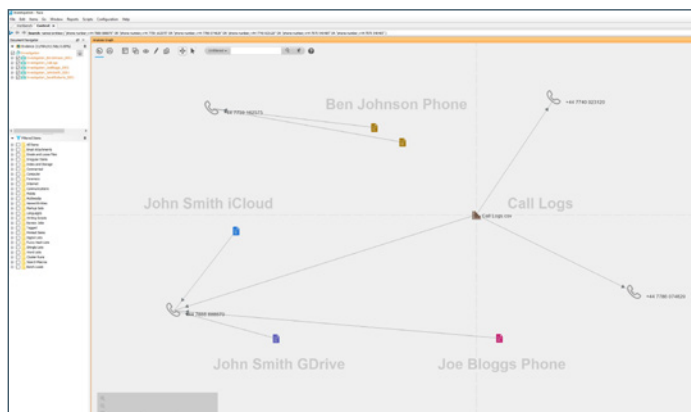
- Make more efficient use of existing resources and hardware to save time and money
- Apply intelligence to prioritize, review evidence, and resolve cases faster to get through backlogs
- Easily investigate complex cases involving multiple linked suspects and devices
- Collaborate across departments and locations, nationally and internationally
- Scale your processes and capabilities to meet current and future “big data” investigation challenges
- Find connections between seemingly disparate investigations to identify common artifacts, intelligence items, and other links over time

EMPOWERING INVESTIGATIONS, NO MATTER HOW BIG OR COMPLEX

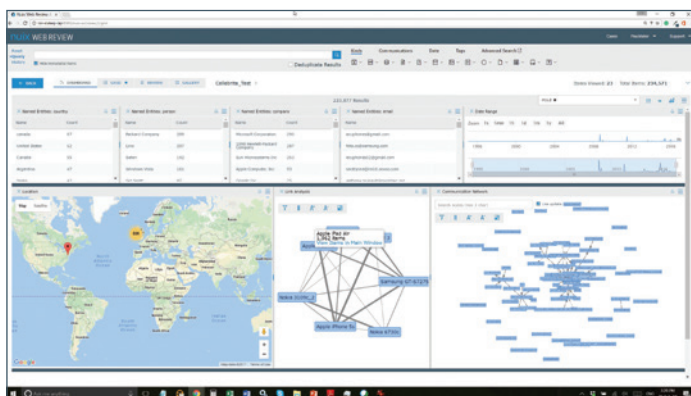
The big data era is a crisis point for digital investigations. How can agencies understand and gain actionable intelligence from the massive amounts of digital evidence involved in investigations in order to solve cases faster, beat backlogs, and prevent future crime?



Automated image recognition and categorization in Nuix



Quickly and easily visualize communication across devices—see who is linked and how



Advanced analytics in Nuix Web Review & Analytics

It all starts with having the right tools. Nuix is the only technology capable of combining forensic depth, petabyte scale, and intelligence extraction from the widest variety of structured, semi-structured, and unstructured data sources.

Nuix Investigator Lab is the core of our investigative technologies. With the right mix of Nuix products, investigative bodies of any size can gain the flexibility to work efficiently, even with multi-terabyte-sized cases, and easily correlate intelligence across multiple evidence sources.

DEDICATED FACILITY OR SINGLE LOCATION

Nuix Investigator Lab

Nuix Investigator Lab is the foundation of our investigation labs. It is ideal for local or smaller regional forensic labs that are dealing with massive or expanding volume, variety, and complexity of digital evidence, and that are looking to build or update a dedicated digital forensics facility.

- Rapidly ingest and process terabytes of digital evidence per day
- Apply parallel and distributed processing to make efficient use of available resources and hardware—quickly making large amounts of evidence available for timely analysis
- Gain a single investigative window into all the digital exhibits and use advanced analytics to find critical evidence and solve cases faster—controlling caseloads and reducing backlogs.

Details

Nuix Investigator Lab includes a high-powered server-based Nuix instance combined with other Nuix solutions to make it flexible enough to meet your needs. It also includes:

- Five reviewer licences, allowing multiple forensic investigators to review and collaborate on an investigation simultaneously, with the option to add more licences
- Portable and network collections
- Separate Nuix Investigation & Response license for laptop or desktop PC.

EXISTING LAB WITH EXPANDING NEEDS

Nuix Investigator Lab + Nuix Web Review & Analytics

Nuix Investigator Lab combined with Nuix Web Review & Analytics is the ideal solution for agencies that conduct investigations with resources spread geographically or are looking to facilitate greater collaboration across departments and teams.

These technologies enable an agency to break down evidence silos and make better use of existing staff and intelligence by putting evidence into the hands of less technical reviewers or case officers sooner in the investigation.

Details

Nuix Web Review & Analytics provides a secure, simplified interface to the Nuix case for non-technical reviewers or collaborators, such as case officers and prosecutors, no matter where they are located. It allows law enforcement and government agencies to:

- Scale up to support hundreds of reviewers as needed
- Overcome geographic or skill-level boundaries to evidence review
- Avoid having to build complex database servers or infrastructure.

COMPLEX LAB REQUIRING HYPER-SCALED EVIDENCE HANDLING

Nuix Investigator Lab + Elasticsearch

Implementing Elasticsearch alongside Nuix Investigator Lab allows law enforcement and government agencies to create an investigative “hyperlab” that supercharges evidence processing, investigation, and intelligence capabilities. You can feel confident you are investing in a digital forensics solution that will scale to meet current and future big data challenges.

This solution is ideal for investigations that involve massive volumes of digital evidence and a number of digital exhibits, that are conducted across multiple regions or jurisdictions or that require the ability to cross-reference and correlate intelligence across multiple current, and historical cases.

Details

- Unparalleled speed of indexing and search—get answers from the data within seconds
- Centralized investigation and intelligence repository—join historical and present cases into a unified investigative view (also known as cross-case federated search)
- Collaborate and break down intelligence silos—bring together hundreds of investigators, officers and analysts to work together on a case, no matter where they are located regionally.

THE NUIX BIG DATA DIFFERENCE—BUILT TO HYPERSCALE

The traditional methods for evaluating digital evidence are unsustainable. Big data is too big, too fast and too hard for traditional forensic tools to process, leading to slow results and massive case backlogs.

Nuix technologies are designed to meet the three challenges of big data—velocity, volume, and variety—and turn it into actionable intelligence by:

- Processing data many times faster than competing products (velocity)
- Scaling to hundreds of terabytes or even petabytes of data (volume)
- Addressing far more file types, forensic artifacts, and storage formats than any other technology across structured, unstructured, and semi-structured data types and focusing on the most complex formats which often contain the largest volumes of data (variety).

BRINGING MORE INTELLIGENCE TO INVESTIGATIONS

Nuix Insight Analytics & Intelligence

Available as an intelligence overlay to Nuix Investigator Lab, Nuix Insight Analytics & Intelligence is a powerful and intuitive data analysis platform that makes it incredibly easy to extract and interact with intelligence from nearly any data source or file type. Analysts with minimal forensic training can quickly identify links between people, objects, locations and events across disparate data sets, and cases. Nuix Insight Analytics & Intelligence is designed specifically to bring to light complex relationships and connections across the data volumes involved in high-tech crime.

Nuix Insight Analytics & Intelligence can combine typical digital forensics data with other intelligence sources such as:

- Open source and cybersecurity intelligence feeds
- Communications data and phone records from mobile carriers
- Machine data generated by human activity, such as building access logs
- Data from endpoints to understand what is going on at the device level
- Intelligence from previous cases
- Other real-world data sources such as flight manifests, and shipping port logs.

FACIAL RECOGNITION AND INTELLIGENCE DATABASE MAPPING

NetClean Integration

Nuix investigation technologies are integrated with NetClean Analyze DI to bridge the gap between text and image analytics. It helps you avoid multiple workflows and additional processing time when handling cases that involve large numbers of image and video files.

- Extract multimedia files from an industry-leading variety of data formats and sources using Nuix
- Deduplicate, analyze and classify digital media with NetClean Analyze DI
- Conduct deep textual and forensic examination on the sources of the most relevant files in Nuix Investigator Lab.

TO FIND OUT MORE VISIT
nuix.com/investigation

ABOUT NUIX

Nuix protects, informs and empowers society in the knowledge age. Leading organizations around the world turn to Nuix when they need fast, accurate answers for investigation, cybersecurity incident response, insider threats, litigation, regulation, privacy, risk management, and other essential challenges.

North America

USA: +1 877 470 6849

» Email: sales@nuix.com

EMEA

UK: +44 203 786 3160

» Web: nuix.com

APAC

Australia: +61 2 9280 0699

» Twitter: [@nuix](https://twitter.com/nuix)

DIGITAL FORENSIC LAB SOLUTIONS DESIGNED FOR YOUR NEEDS

With so much digital evidence involved in every investigation, even the most straightforward cases require solutions to support investigators to work more efficiently and intelligently. Nuix can scale from traditional forensic environments to digital forensic labs that handle complex criminal matters such as investigating drug cartels, terrorist networks, and online child abuse with multiple linked suspects and devices.

POWERED BY THE NUIX ENGINE

Nuix's patented parallel processing engine can search virtually unlimited volumes of unstructured data with unmatched speed, and precision. The Nuix Engine's forensic processing capabilities have been validated by courts, government agencies, and corporations worldwide.

